



MAGIC COMPOSITES, INC.
中德合资河北曼吉科工艺玻璃钢有限公司



**CORROSION
RESISTANT
FRP FANS &
BLOWERS**



www.fiberglass-reinforced-plastic.com



MAGIC COMPOSITES, INC.
中德合资河北曼吉科工艺玻璃钢有限公司

ABOUT MGI

Magic Composites, Inc., a German-Chinese joint venture, is a manufacturer of fiberglass reinforced plastics (FRP) products in China. It has the ability to produce engineered, high quality, and reliable industrial air moving equipment and a variety of other corrosion resistant products for commercial, industrial and wastewater applications.

Magic has the capability to offer FRP fans & blowers manufactured to meet your unique application requirements. Magic also provides professional services for Original Equipment Manufacturer (OEM) customers at an increasingly competitive price.

High Quality FRP Products at Great Prices



www.fiberglass-reinforced-plastic.com



PRODUCTS

FRP Centrifugal Roof Exhausters

The Centrifugal Roof Exhaust Fans include both direct and belt driven fans with backward inclined centrifugal wheels. Fiberglass centrifugal roof ventilators are designed for the exhaust of moisture-laden, corrosive, or chemically contaminated air frequently associated with natatoriums, aquariums, indoor swimming pools, laboratories, and waste water treatment plants.

Fiberglass Downblast Dome Roof Exhauster - Direct Drive

Sizes 12" through 18" (30cm through 45cm)

Capacities from 500 to 3,400 CFM (14 to 96 m³/min)

Fiberglass Downblast Dome Roof Exhauster - Belt Drive

Sizes 12" through 40" (30cm through 100cm)

Capacities from 1,000 to 20,000 CFM (28 to 560 m³/min)

Fiberglass Upblast Roof Exhauster - Direct Drive

Sizes 12" through 18" (30cm through 45cm)

Capacities from 500 to 3,400 CFM (14 to 96 m³/min)

Fiberglass Upblast Roof Exhauster - Belt Drive

Sizes 12" through 40" (30cm through 100cm)

Capacities from 1,300 to 20,000 CFM (37 to 560 m³/min)





PRODUCTS

FRP Axial Flow Fans

Magic axial flow Fiberglass Reinforced Plastic fans are built in a variety of sizes and designs. Fiberglass direct and belt drive axial fans are designed for a corrosive air-stream application where standard metallic fans will not work due to the environment. Ideal for installation in hospitals, schools, research labs, fume exhaust systems and high moisture areas.



Fiberglass Tubeaxial Fan - Belt Driven

Sizes 12" to 60" (30cm to 150cm)

Airflow from 1,000 to 65,000 CFM (28 to 1840 m³/min)

Fiberglass Tubeaxial Fan - Direct Drive

Sizes 12" to 60" (30cm to 150cm)

Airflow from 1,300 to 75,500 CFM (36 to 2136 m³/min)

Fiberglass Vaneaxial Fan - Belt Driven

Sizes 12" to 60" (30cm to 150cm)

Airflow from 650 to 68,000 CFM (18 to 1925 m³/min)

Fiberglass Vaneaxial Fan - Direct Driven

Sizes 12" to 60" (30cm to 150cm)

Airflow from 1,200 to 68,000 CFM (34 to 1925 m³/min)

FRP Wall Ventilators



Fiberglass wall ventilator is designed to mount compactly within an exterior wall and satisfy general building exhaust requirements. Specifically designed for the exhaust of moisture-laden, corrosive, or chemically contaminated air frequently associated with natatoriums, aquariums, indoor swimming pools, laboratories, and waste water treatment plants.

Sizes 12" to 60" (30cm to 150cm)

Airflow from 1500 to 55,000 CFM (42 to 1556 m³/min)



PRODUCTS

FRP Roof Ventilators



Magic fiberglass roof ventilators are available in upblast and hooded designs. Upblast roof ventilators feature an airfoil axial impeller and are available in sizes 12" though 60". Hooded ventilators can be used for either intake supply or exhaust applications.

Fiberglass Upblast Roof Ventilator - Belt Drive

Sizes 12" to 60" (30cm to 150cm)

With belt drive capacities ranging to 54,000 CFM (1530 m3/min)



Fiberglass Upblast Roof Ventilator - Direct Drive

Sizes 18" to 60" (45cm to 150cm)

with capacities ranging to 54,000 CFM (1530 m3/min)

Fiberglass Hooded Roof Ventilator - Belt Drive

Sizes 12" to 72" (30cm to 180cm)

Airflow from 1,000 to 87,000 CFM (28 to 2460 m3/min)

Fiberglass Hooded Roof Ventilator- Direct Drive

Sizes 24" to 60" (60cm to 150cm)

Airflow from 3,600 to 72,000 CFM (100 to 200 m3/min)

FRP Centrifugal Fans

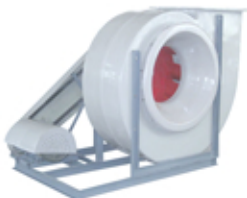


Magic Centrifugal Fans provide a convenient package design fan with high quality corrosion resistant housing and wheel, constructed of fiberglass reinforced plastic. Fiberglass reinforced plastic fans are resistant to attack from most chemicals and are ideally suited for application handling corrosive gasses typical in the chemical, pulp and paper, waste water treatment, fertilizer, pharmaceutical, and metal treatment industries.

Fiberglass Centrifugal Fan - Backward Curved

Sizes 12" to 78" (30cm to 150cm) wheel diameters

Airflow from 500 to over 90,000 CFM (15 to 2550 m3/min)



Fiberglass Pressure Blower - Radial Blade

Sizes 20cm to 30cm (8" to 12") wheel diameters

Airflow from 40 to 1,200 CFM (1.1 to 34 m3/min)



Fiberglass Backward Inclined Utility Fans

Size from 10" to 24" (30cm to 72cm) wheel diameters

Capacities from 500 to 10,500 CFM (15 to 298 m3/min)



PRODUCTS

FRP In-Line Centrifugal Fans



Fiberglass In-Line Centrifugal fan combines the design advantages of the axial flow fan with the performance characteristics of the centrifugal fan. These compact inline fans are the ideal selection for indoor clean air applications including intake, exhaust, return, or makeup air systems where space is a prime consideration. Available in belt drive or direct drive, square or tubular.

Sizes 12" to 60" (30cm to 150cm) wheel diameters.
Airflow from 800 to 85,000 CFM (23 to 2400 m³/min)

OEM SERVICES

By OEM with Magic Composites, Inc., your company will benefit from:

A professional, experienced and enthusiastic team - as we are very familiar with fiberglass reinforced plastic products, you will save a lot of time and hassle when working with us.

Quick response and great communication - our international trading department is set up to meet your expectations. All questions and enquiries will be answered in English.

Competitive price - You will get better deals because of the difference in currency rates.

High efficiency and prompt delivery - We can make 1 fiberglass chair every minute and 24/7 non-stop. Give us a reasonable dead line and we will just meet it.

Excellent quality products and services - in order to gain 100% satisfaction from customers, we continuously look for ways to improve quality on our products and services.

Strong quality control - we have set very high standard for quality. Our products might not be the cheapest, but they offer the best overall values.

* All we need is either a sample product, or a graphical drawing completed with sufficient technical details. The more information we receive, the better result we are likely to achieve. We will show you the demo product before starting off large production. There will be a minimum charge for making the model from either sample product or drawing.



MAGIC COMPOSITES, INC.

MAGIC COMPOSITES, INC.

The Leading Manufacturer of Fiberglass Reinforced Plastic Products in China

258 N Fuqiang Road,
Zaoqiang, Hebei Province, China 053100
Tel: +86-318-8260816
Fax: +86-318-8260839
sales@fiberglass-reinforced-plastic.com
www.fiberglass-reinforced-plastic.com